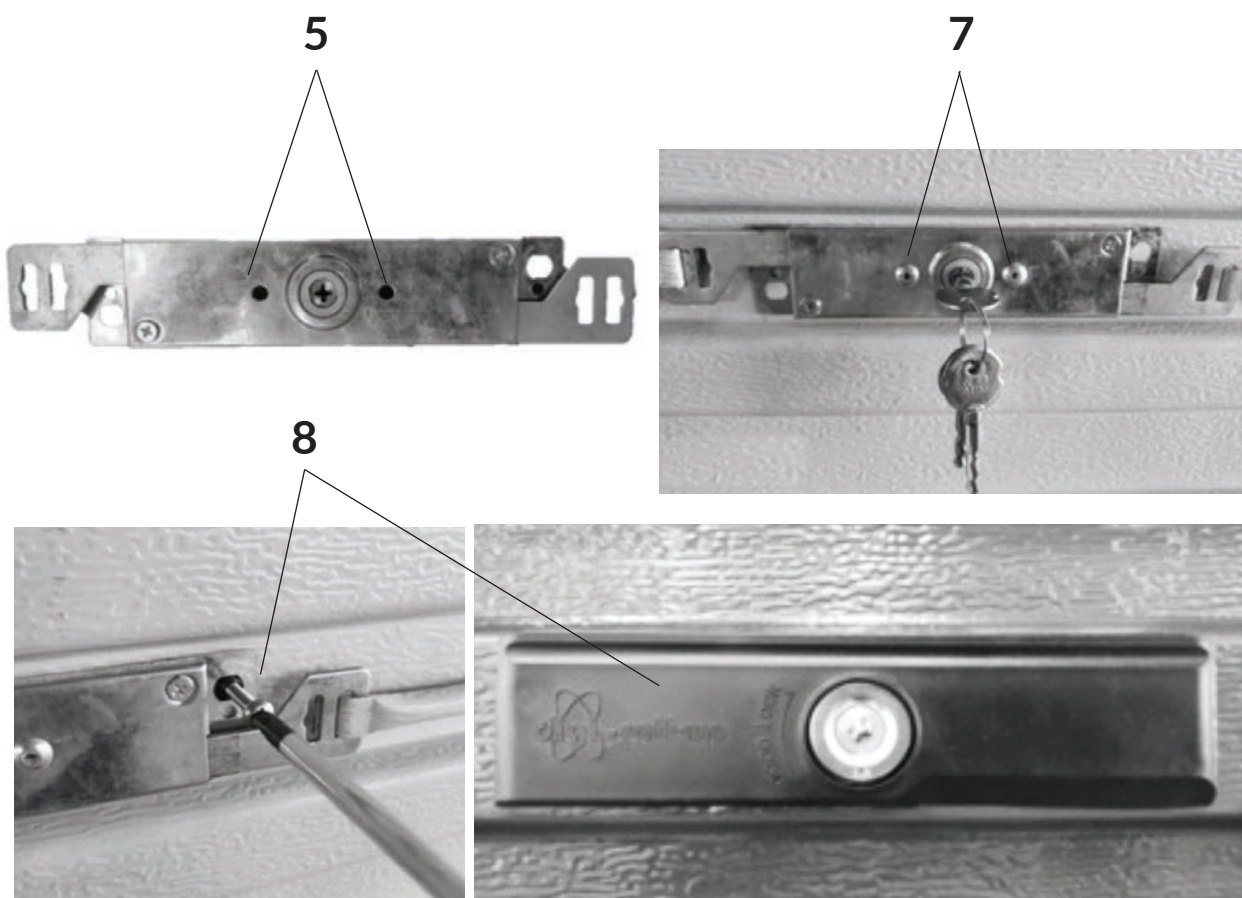


## Installation of Roll Up Garage Door Lock

1. Insert the lock rods into the locating holes of the side guide rails.
2. Place the lock into the door from the inside.
3. Hook the lock rods into place on the sides of the lock.
4. Position the lock.
5. Use the locating holes and drill through the garage door with a 5mm drill bit.
6. Insert a 4.8mm x 12mm pop rivet into each hole.
7. Fasten the lock from the inside with a pop rivet gun.
8. Install the Plastic face cover of the lock on the outside of the door, fastening it from the inside.



The Hydro Guarantee Certificate is available for download at [www.swartland.co.za](http://www.swartland.co.za)